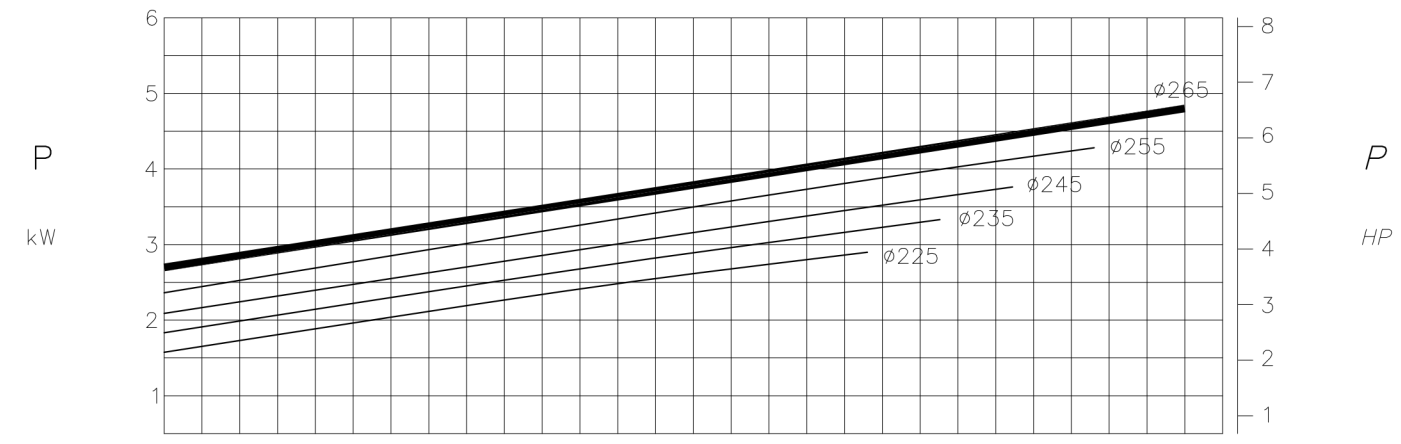
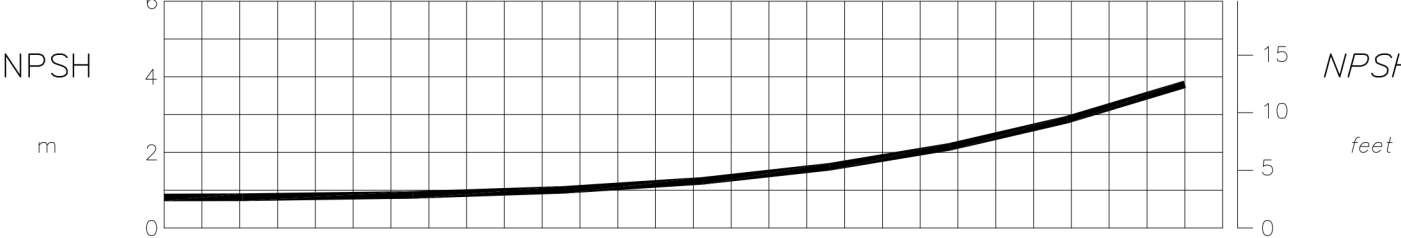
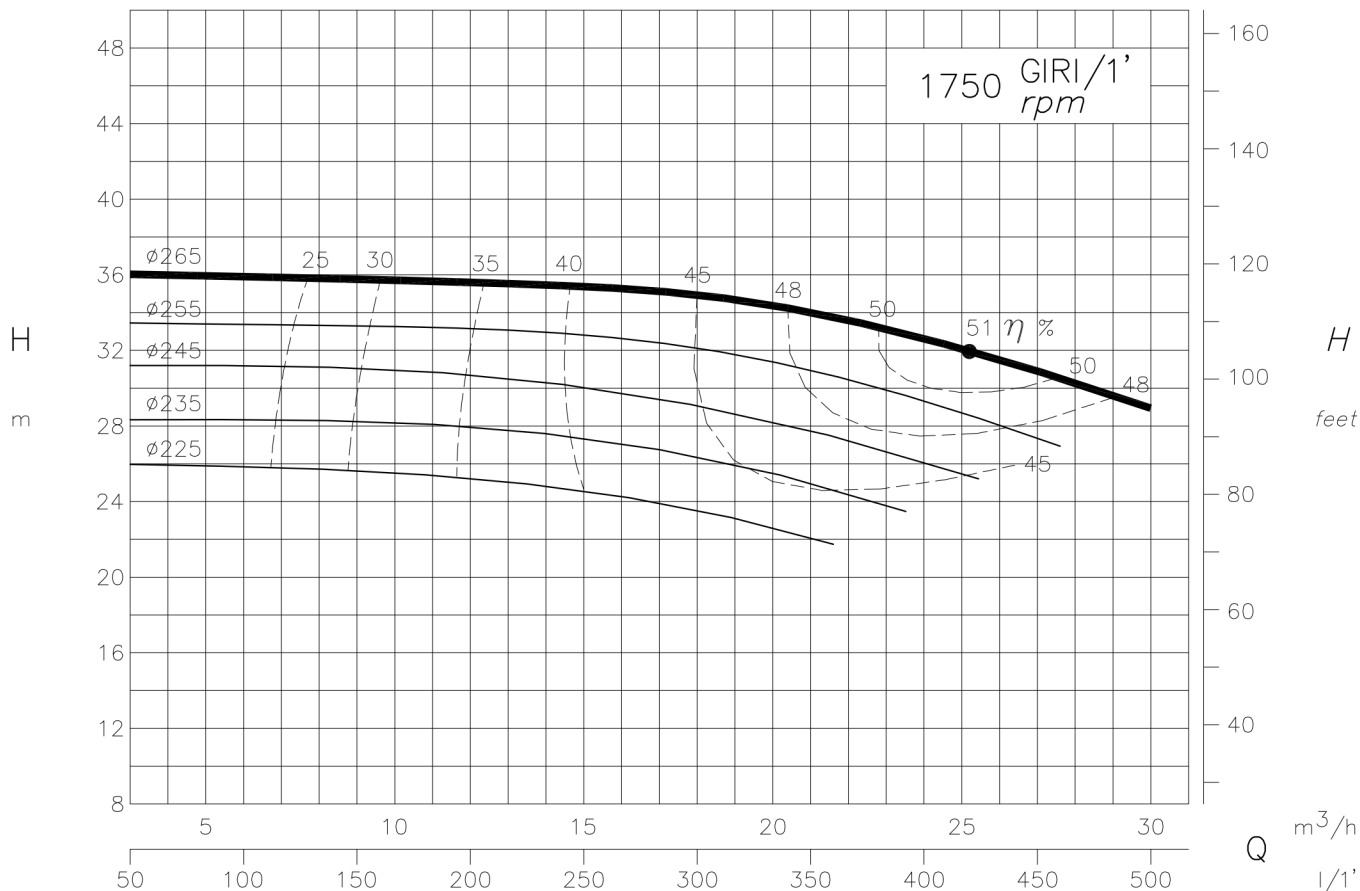
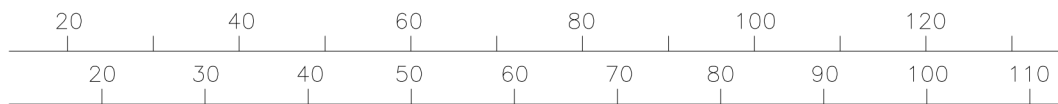


I DATI RIPORTATI SONO RIFERITI A :

Data refers to :

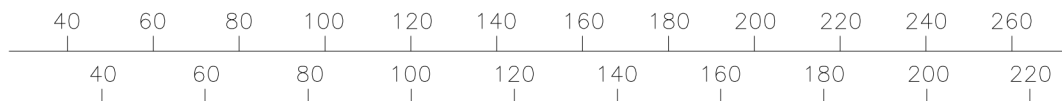
TEMPERATURA MAX. 30 °C - (86 °F) Max. Temperature
PESO SPECIFICO 1 Kg/dm³ Specific gravity
VISCOSITA' 1 °E Viscosity



I DATI RIPORTATI SONO RIFERITI A :

Data refers to :

TEMPERATURA MAX.	30 °C - (86 °F)	Max. Temperature
PESO SPECIFICO	1 Kg/dm ³	Specific gravity
VISCOSITA'	1 °E	Viscosity



U.S. gal/1'
Q
Imp. gal/1'

